

## SOCIAL

## Social Outcomes and Early Life Experience 2 Year Follow-up Study

Researchers from the **University of Manchester** would like to invite you and your parent/s to take part in a second part of the *Social Outcomes and Early Life Experience Study* –

**SOCIAL2**. This sheet will tell you about the study. You can talk it over with your family or carer and contact the researchers if you have any questions.

### What is the research about?



In the first part of the SOCIAL study we wanted to learn about children and young peoples social behaviour - how you think about people, interact with your friends and get along with adults. We met and spoke with many families living across the UK. From this we found a lot of interesting things about the different ways that young people interact with other people.

Now we would like to know how things might have changed for you, two years after we first met with you. We would also like to find out how you are getting on with your family now. The results of the study could help us to help children and families in the future.

### What will happen if we take part?

A researcher will visit you and your family at a time that suits you all best. This can be at your own home or at the University of Manchester. During the visit we will ask your parent/guardian to fill out some questionnaires about how you are getting on with your friends and other people at the moment. We will also ask your teacher to fill out a questionnaire with some information about you and how you are getting on at school.

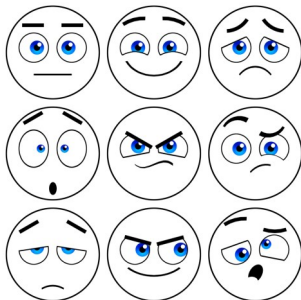
## What will I be asked to do?

If you agree to take part we will ask you to complete some tasks that will help to tell us how you think about and understand people.



Firstly, we will ask you some questions about one of your friends, such as how you get along with them, why you are friends with them and other similar questions.

Next we will read some short stories to you and ask you to answer some questions about them. This will involve repeating some sentences and matching pictures to words. You will also be asked to answer some questions about how you think about other people.



Finally, we will ask you to look at some expressions of faces and describe to us how they feel.

When you have completed these tasks, we will also ask to take some measurements including your height, head size, hand and feet size and some photographs of your face.

## Will anyone else find out what I say or do if I take part?

- Nobody outside of the research team and your parents/guardians will find out what you say or do when taking part in the research.
- **But** – if you said something that made the researchers think that you or someone else is at risk of harm, we would have to decide who we tell about this.
- You will be given an identification number so that your name will not be written on any of your information or results.

## What happens if I don't want to answer all of the questions?

If you find a question upsetting or too hard to answer then you will not have to answer it. If you feel tired during the tasks, you can have a break or choose to finish the tasks another time.

## What are the benefits of taking part?

For taking part in the research you will be given a £10 shopping voucher. In addition, the results of the research may go on to help other children and young people in the future.

## Contact Information

If you would like more information about the study or you have any questions about it please contact:

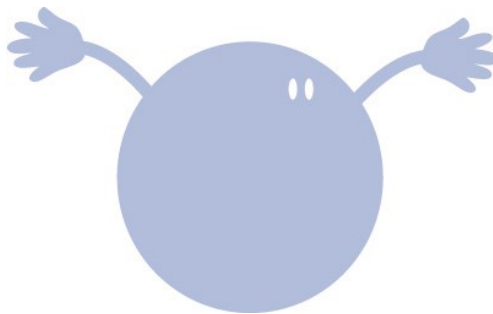
Dr Catherine Kay  
[Catherine.kay@manchester.ac.uk](mailto:Catherine.kay@manchester.ac.uk)  
0161 306 7967

Professor Jonathan Green  
[Jonathan.green@manchester.ac.uk](mailto:Jonathan.green@manchester.ac.uk)  
0161 306 7941

### Address:

**Freepost RSRU-TUGC-YUJE,**  
Dr Catherine Kay  
Room , 3.316 Jean McFarlane Building,  
University of Manchester, Oxford Road, MANCHESTER, M13 9PL

# 'THANK YOU!'



This study has been approved by the University of Manchester Ethics committee: ref - 10405

