

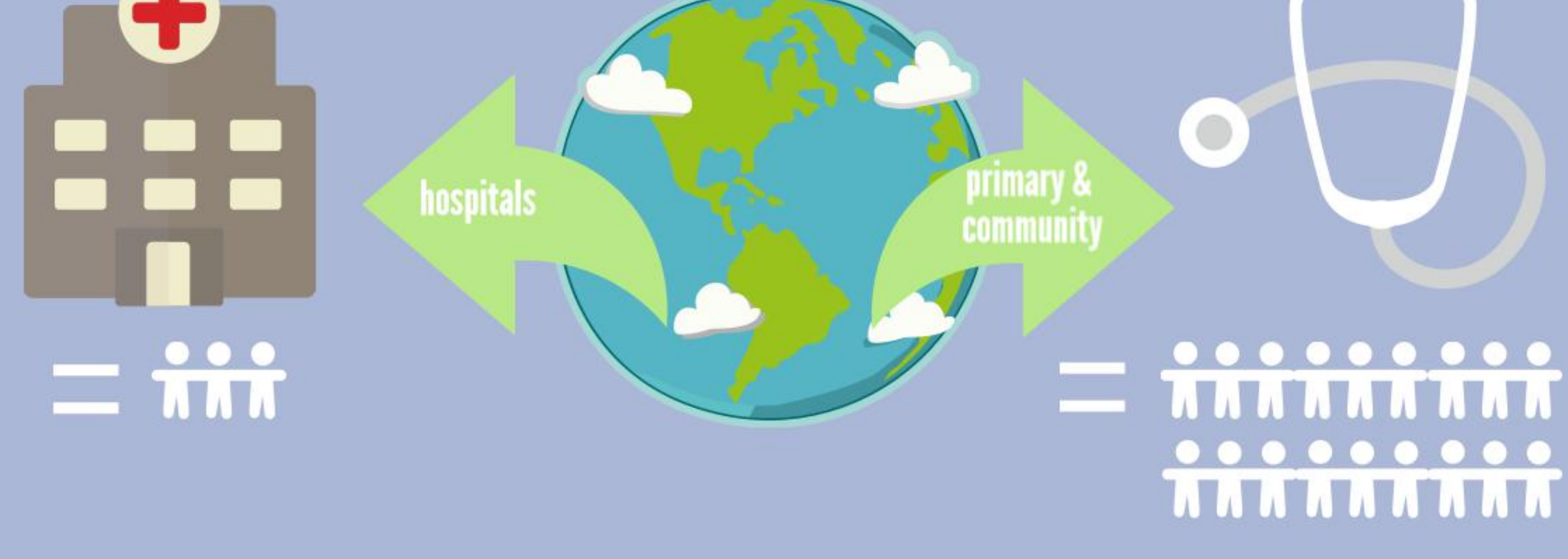


# James Lind Alliance Primary Care Patient Safety Priority Setting Partnership



Globally, most patient contact occurs out of hospitals in primary and community settings...

## Context



**BUT**

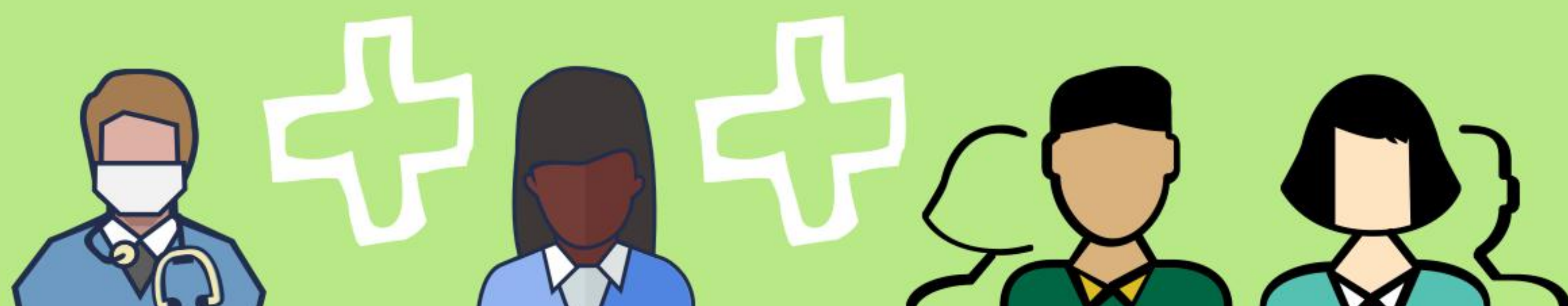


...there is **far more** patient safety research carried out in hospitals than there is in primary care.

## Stage One

## Ask

We started by asking patients, carers and healthcare professionals what they think the most important unanswered questions in primary care patient safety are...



## Stage Two

## Analyse

**443 questions** were submitted. Those questions were analysed, duplicates removed and the remaining questions separated into themes...



## Stage Three

## Prioritise



## The top 10 primary care patient safety questions are:

## Top 10

- How can patient safety be assured for the most vulnerable in society (e.g. people who are frail, have mental health problems or cognitive impairments)?
- How can we make sure that the whole patient is treated, not just one condition and with mental health and physical health both being treated together?
- How can we improve safe communication and co-ordination of care between primary and secondary care?
- In what ways does work intensity, hours worked and staffing levels affect patient safety / near misses?
- How does continuity of care influence patient safety?
- How well do patients understand the information that has been conveyed to them during the consultation?
- What can primary care do to identify and support people who may be at risk of suicide?
- Which type of practitioner (GP, advanced nurse practitioner, practice nurse) is safest to see which types of patients (acute illnesses, acute or chronic multi-morbid)?
- How can information within patient medical records be made available to patients and care providers in a way that protects privacy and improves safety and quality of care?
- How can risks be mitigated to allow for safe complex care at home?

## Stage Four

## Action



Find out more: <http://research.bmh.manchester.ac.uk/PatientSafetyPSP>